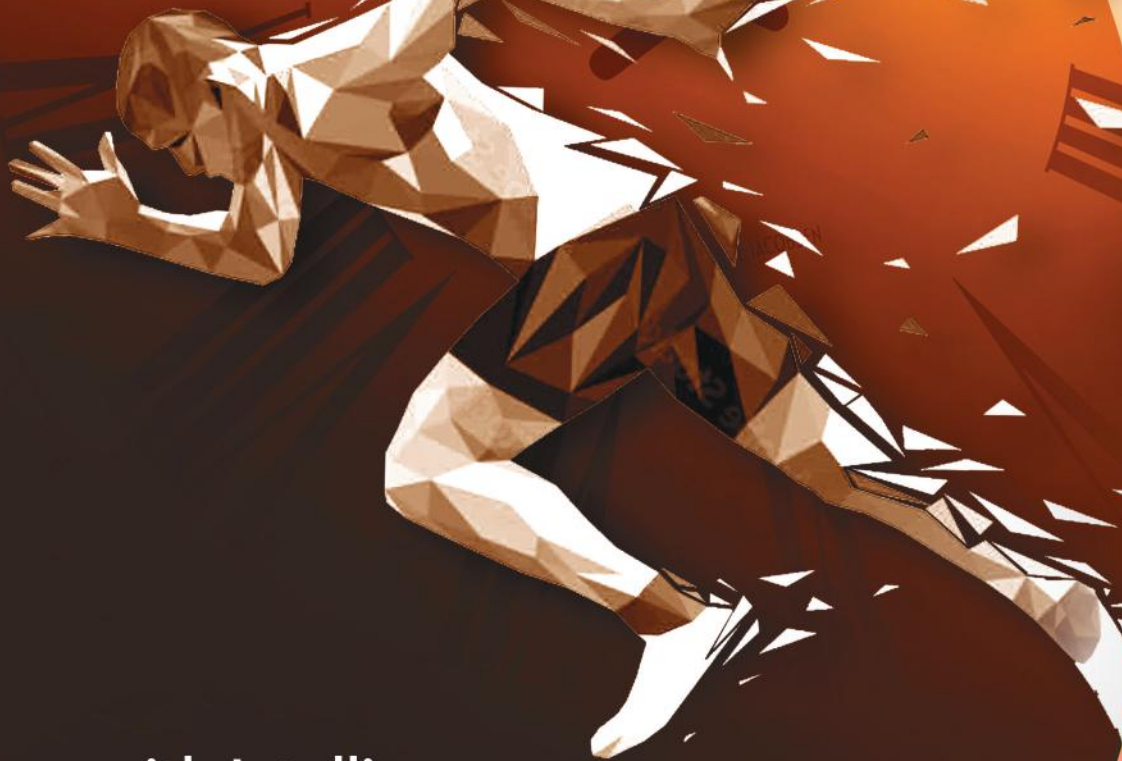


4 Minutes

Locate lab assets before one
can run a mile.



Partner with Intelligence

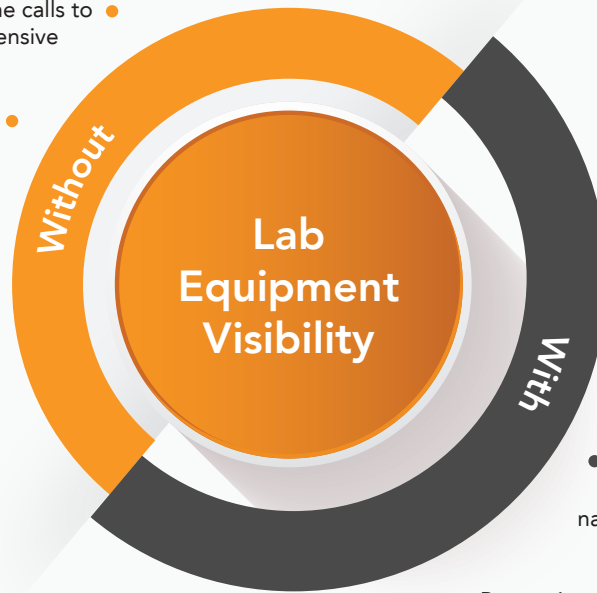
Auto-audit calibration cycles
Accuracy in cost-allocation
IP protection

Considerable man hours spent on lab equipment search - SOX Audit, ISO Audit, Simple Assets

Memorising, multiple email trails and phone calls to locate project equipment is time intensive

Lack of equipment clarity leads to avoidable existing equipment procurement

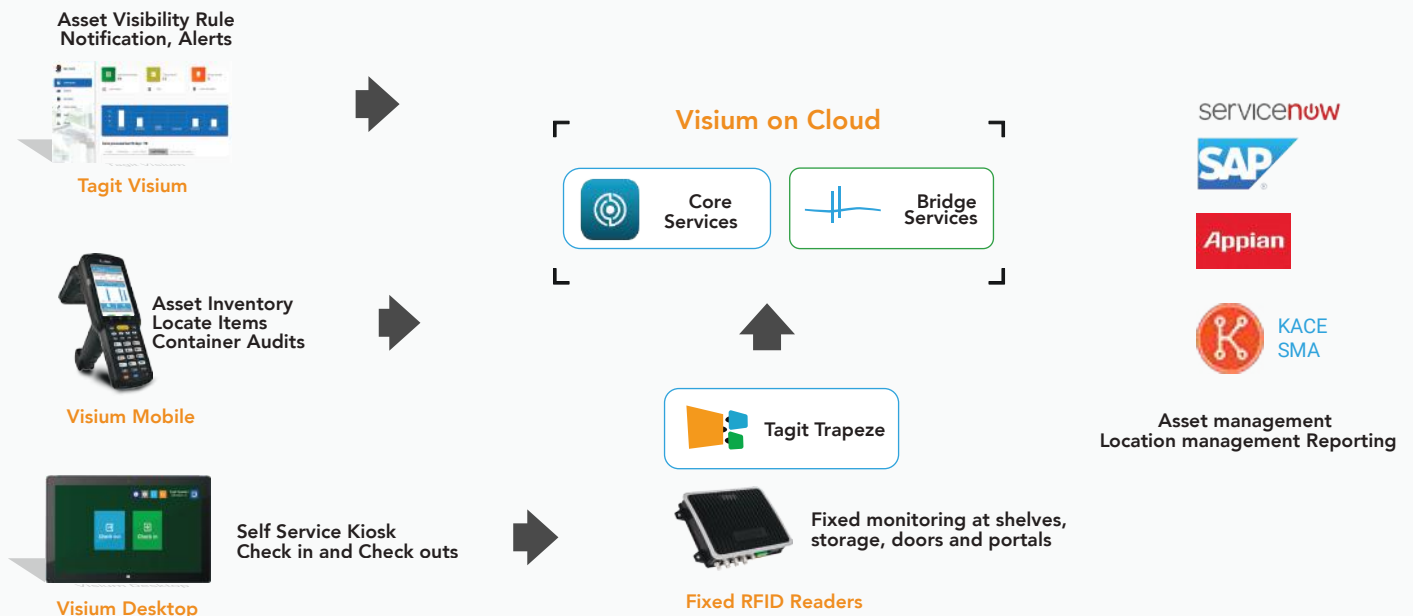
Missed calibration by due dates of a large number of assets during calibration cycles.



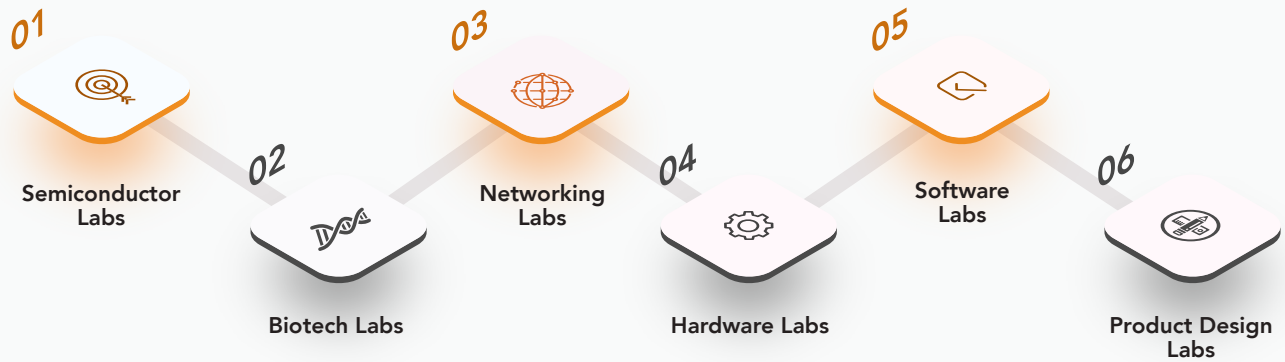
- A single point visibility of all lab-equipment and kits.
- Breakdown of equipment by features, inventory, ownership, availability, calibration for easy access.
- Increase equipment sharing with on-demand availability & timely maintenance.

● Prevention of equipment hoarding

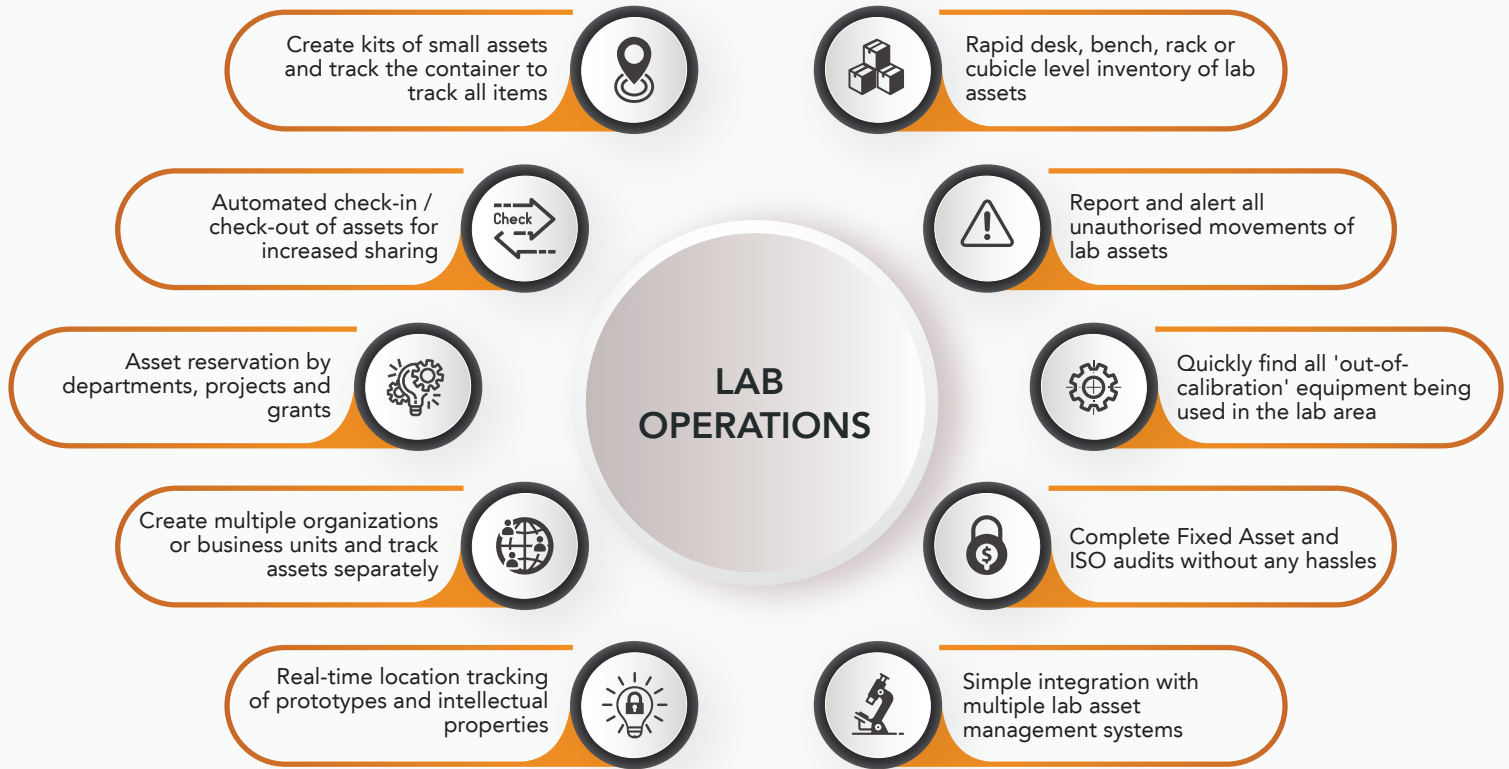
ARCHITECTURE



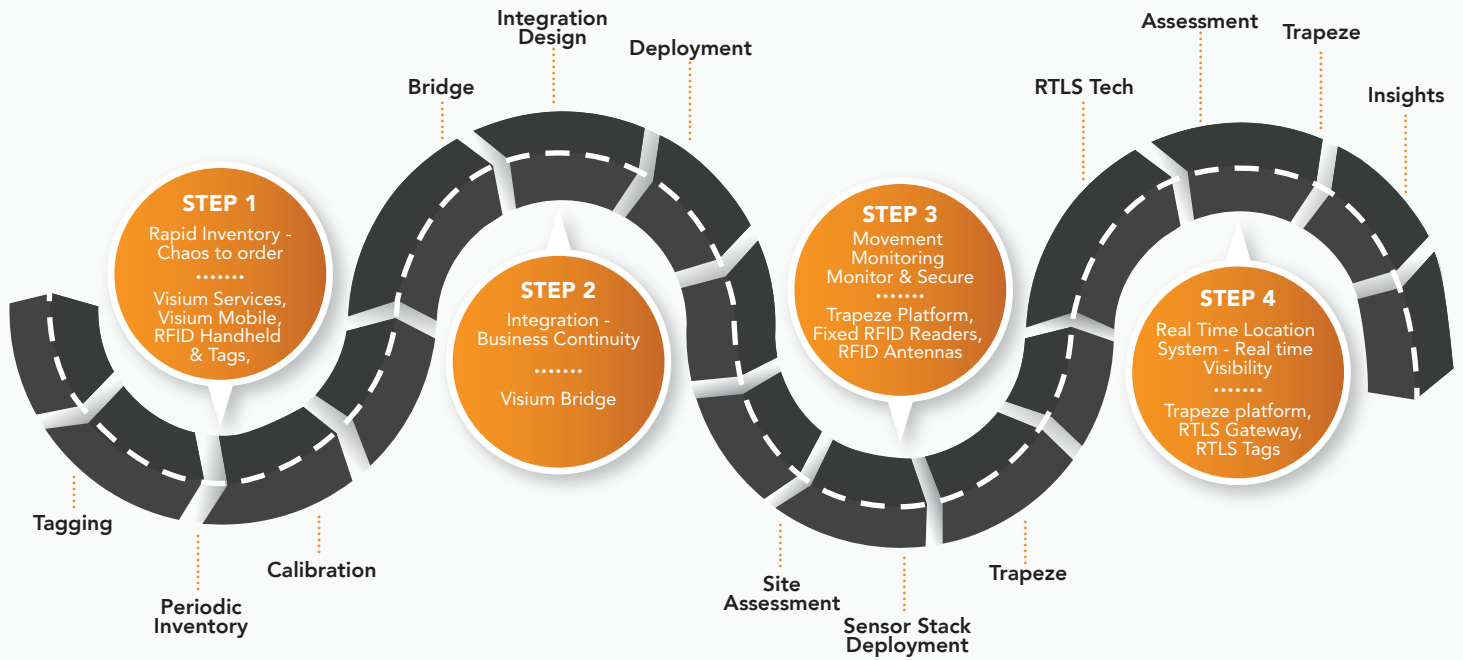
FACILITIES:



CAPABILITIES:



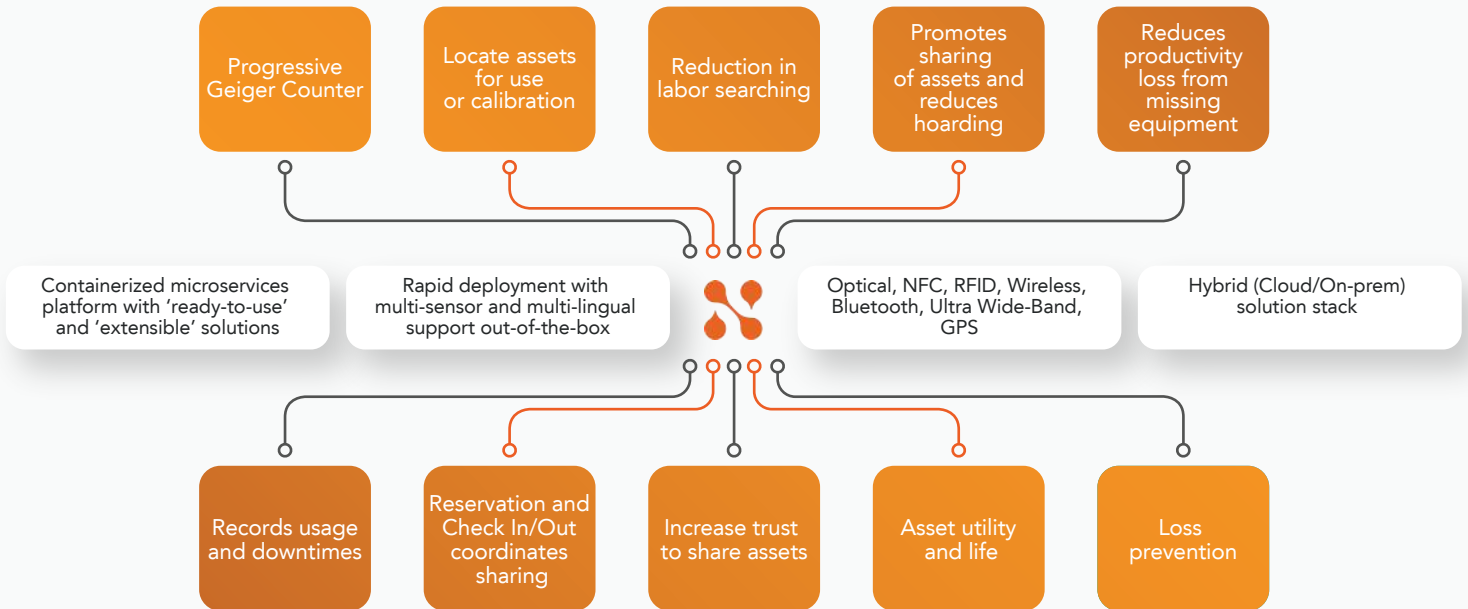
ROADMAP:



SPOTLIGHT

- STEP 1** | 100% accurate inventory
98.5% Productivity Improvement
- STEP 2** | Service now, calibration records, find the item
- STEP 3** | First location to look
Alert unauthorised movements
Protect Critical Assets
- STEP 4** | Locate critical assets instantly
Prevent movement violation

TENETS:



RELATED SOLUTIONS:

